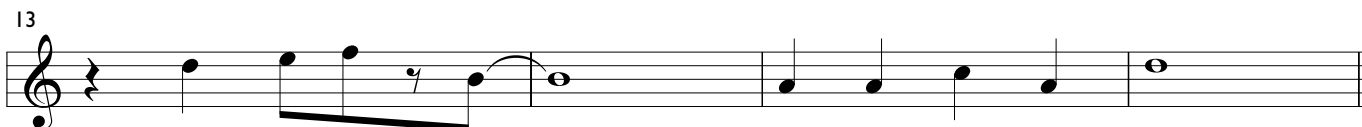
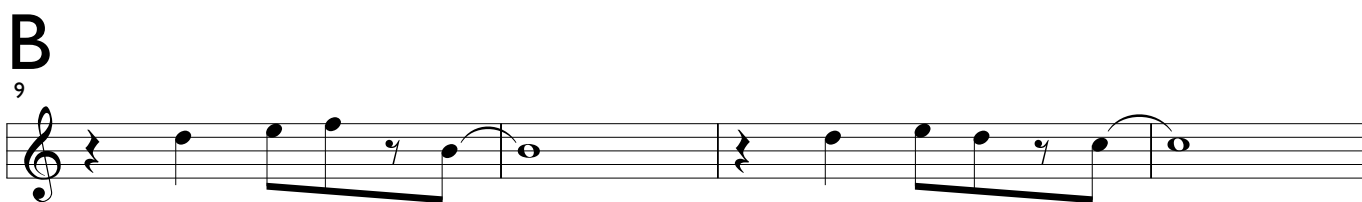


# Bassflöte im Violinschlüssel mit Sopranblockflötengriffen spielen

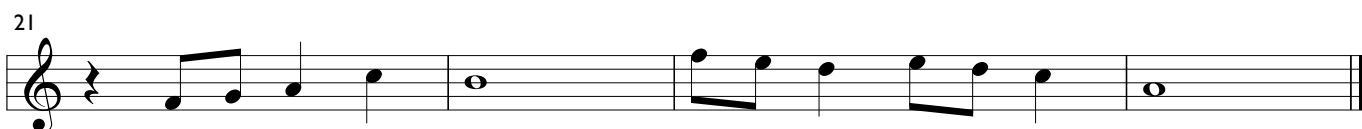
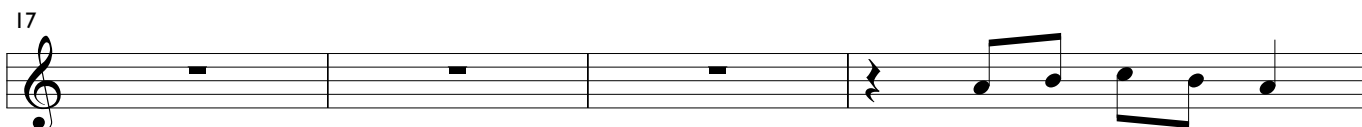
## 2. Twilight

Impro Teil A: D - F - G - A - H - C  
(auch Sopranflötengriffe)

**A** (♩ = ca. 100)



### Coda

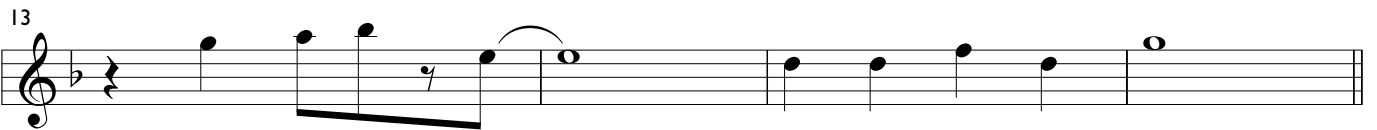
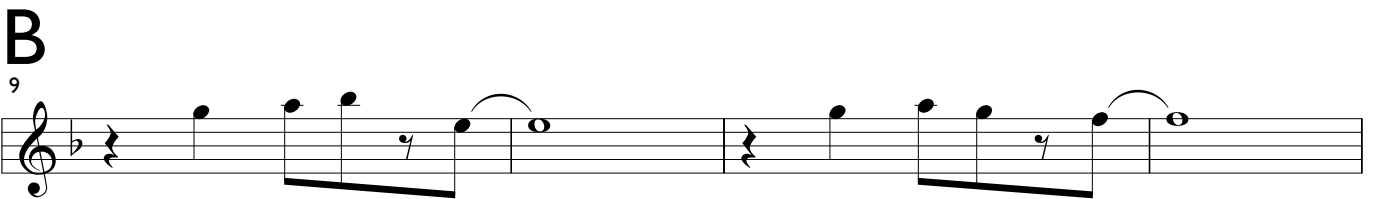
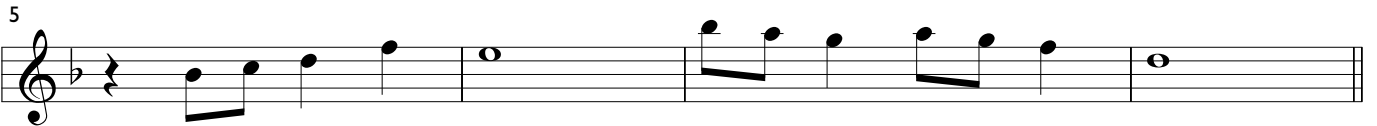
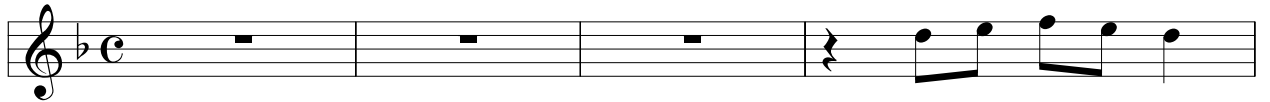


# Bassflöte als Altblockflöte notiert

## 2. Twilight

Impro Teil A: G - B - C - D - E - F

**A** (♩ = ca. 100)



**Coda**

