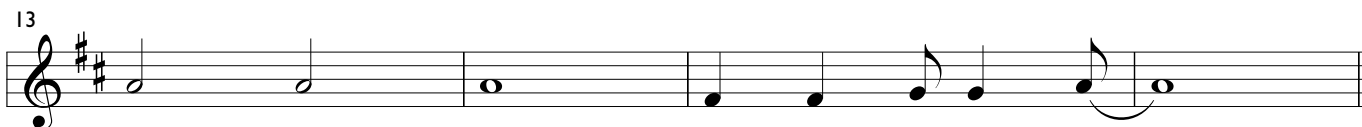
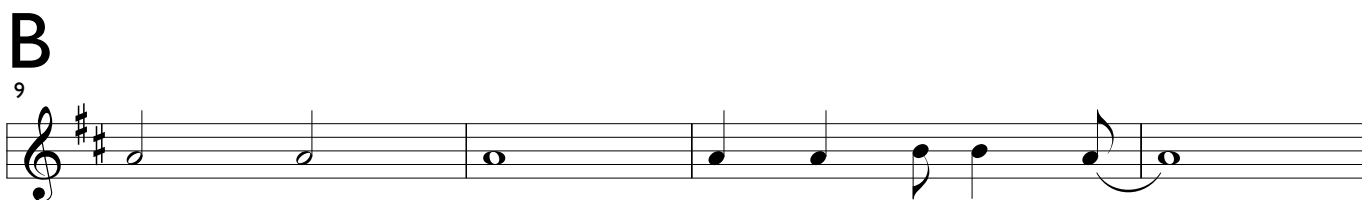
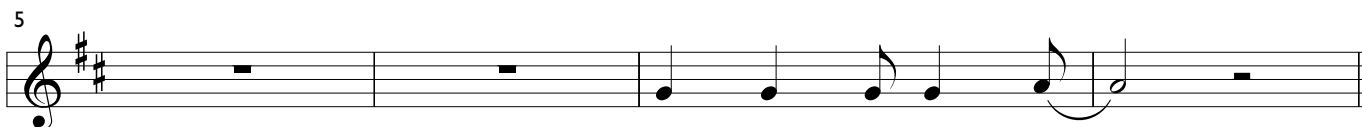


# Part 3: Altblockflöte mit Sopranblockflötengriffen

## I. Nip-and-tuck Race

Impro Teil A: D - E - G - A  
(auch Sopranflötengriffe)

**A** (♩ = ca. 140)



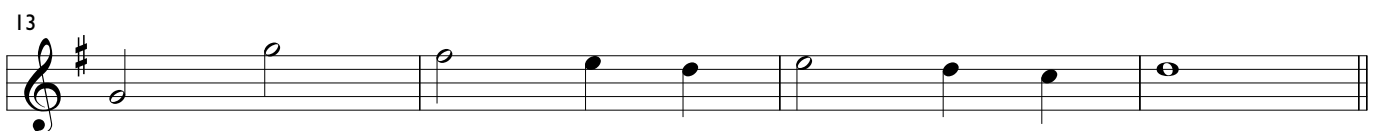
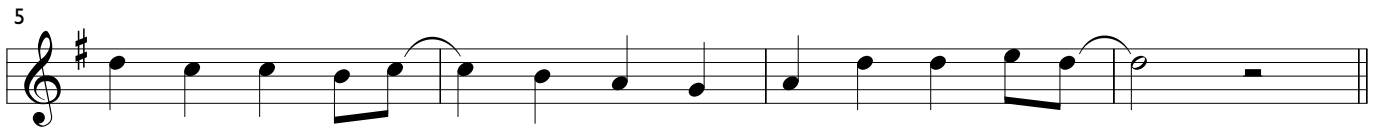
### Coda



# 2. Time Will Tell

Impro Teil A: G - A - H - D - E  
(auch Sopranflötengriffe)

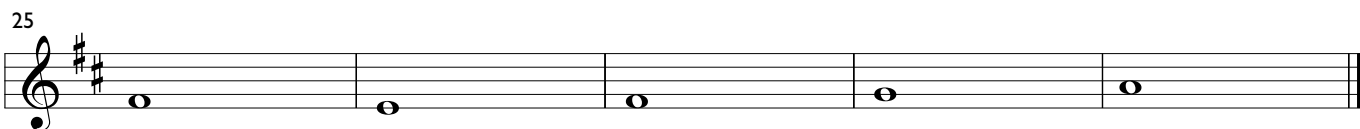
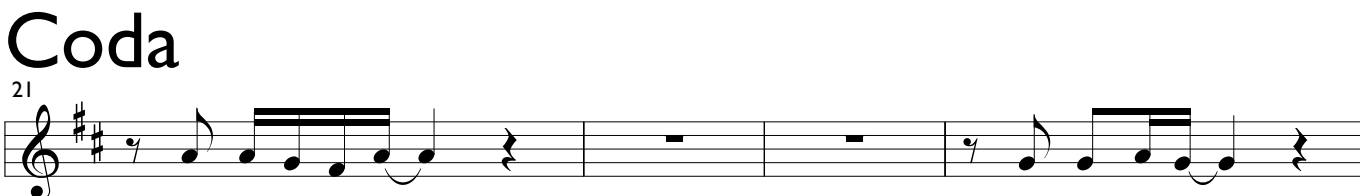
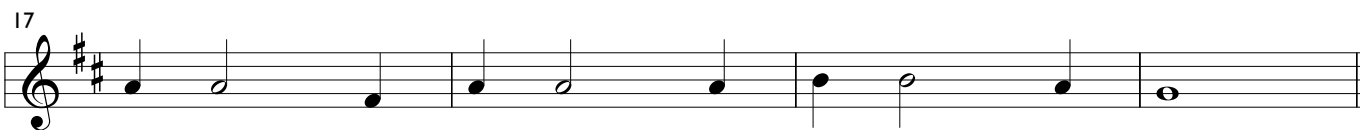
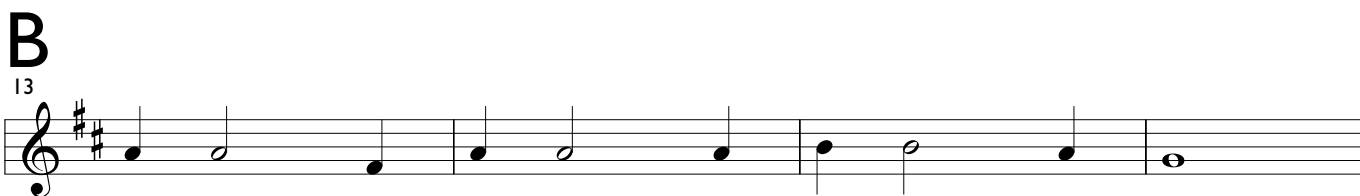
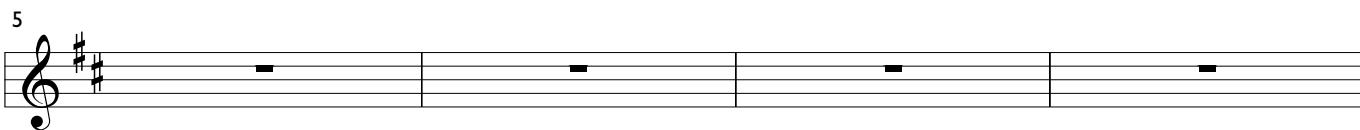
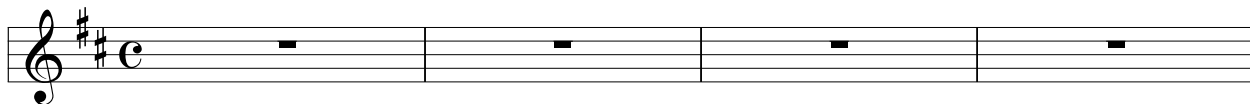
**A** (♩ = ca. 90)



# 3. Someday

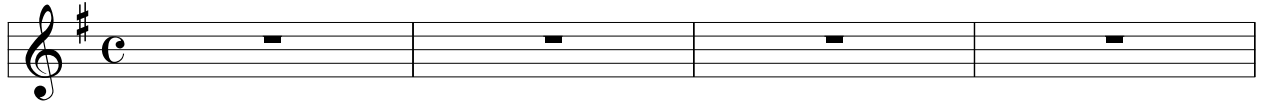
Impro Teil A: D - E - Fis - A - H  
(auch Sopranflötengriffe)

**A** (♩ = ca. 70)

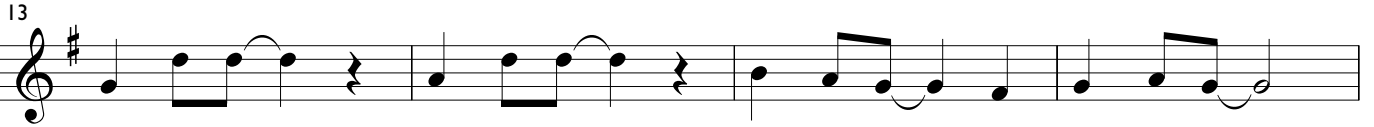


# 4. Cheeky Monkey

**A** (♩ = ca. 140)



**B**



**Coda**

