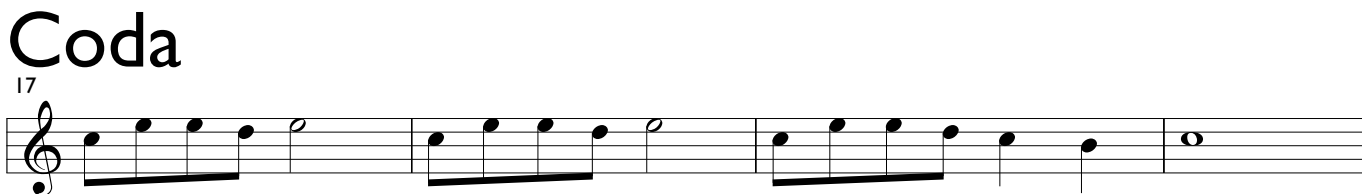
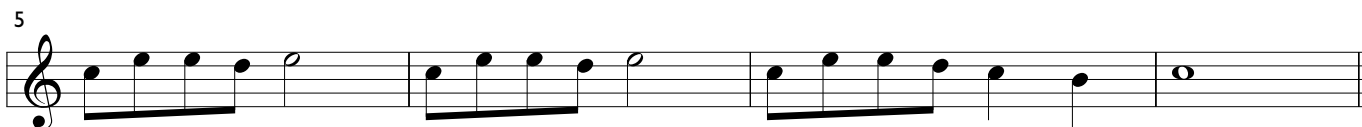


Part 2: Altblockflöte mit Sopranblockflötengriffen

I. Heavy Stuff

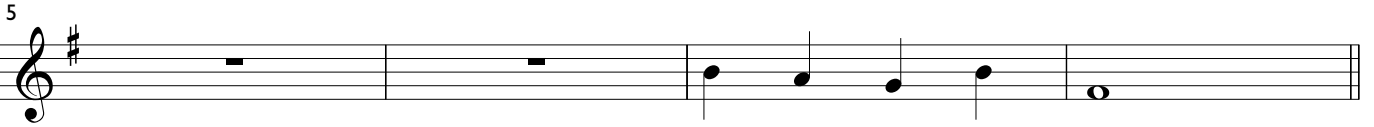
Impro Teil A: C - D - E - G - A
(auch Sopranflötengriffe)

A (♩ = ca. 150)

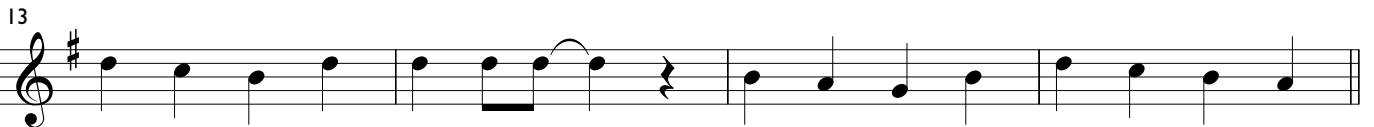


2. Relax

A (♩ = ca. 130)



B



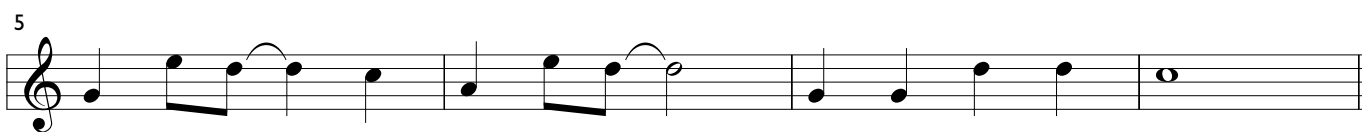
Coda



3. Easy Going

Impro Teil A: C - D - E - G - A
(auch Sopranflötengriffe)

A (♩ = ca. 100)



Coda



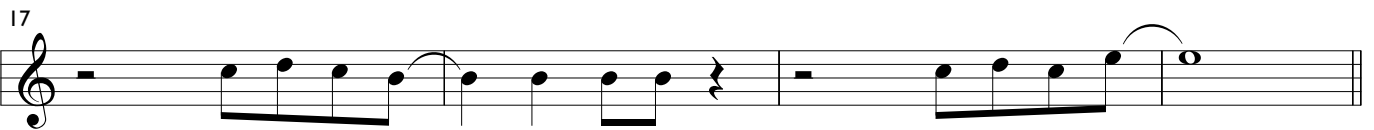
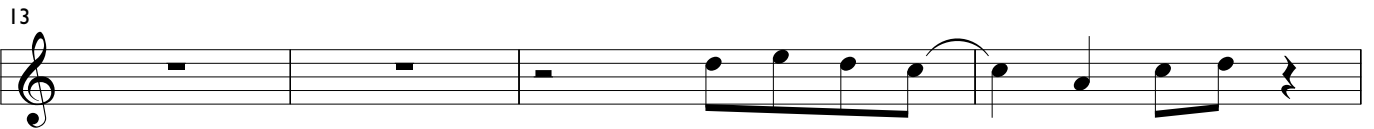
4. Get the Kick

Impro Teil A: C - D - E - G - A
(auch Sopranflötengriffe)

A (♩ = ca. 150)



B



Coda

